

WELCOME



WILLMOTT DIXON

SINCE 1852

The ultimate journey
2017 - 2021



Dear Team...



SCAPE HQ



SCAPE
CONSTRUCTION



THE ULTIMATE JOURNEY

2017-2021 REVIEW

Interiors



WILLMOTT DIXON
INTERIORS

Our interiors team have gone from strength to strength over the last framework iteration, we have seen the opening of a brand new office in the Midlands and the team has grown in numbers allowing them to deliver some exceptional projects on one of the fastest growing areas of the business led by Josh and Jolene.



JOSHUA ARMSTRONG
FRAMEWORK MANAGER
LONDON & SOUTH

JOLENE M'CLAREN
FRAMEWORK MANAGER
MIDLANDS & NORTH



Click [here](#) to find out more about Willmott Dixon Interiors

13 projects delivered

£74m project value

£24m+ invested in our communities

All data used in this report correct as of October 2021, using Q17 SCAPE report findings.



In the spotlight....



PAGE HOTEL ST MARTIN'S PLACE

Story:

Converting an office building into a high-end, 136 room hotel complete with a fifth floor restaurant. On this flagship site, the hotel boasts sensational views overlooking Trafalgar Square.

Value: £23.1m

Outcome: Completed



OLD ADMIRALTY BUILDING

Story:

CAT B fit out and refurbishment, representing 250,000 sq.ft of commercial office space across five floors, providing a modern and flexible working environment.

Value: £110m
(combined programme value)

Outcome: Completed



WOLVERHAMPTON CIVIC HALL

Story:

Transforming Wolverhampton's iconic music venue, major refurbishment and extension of the concert hall which will see total capacity increased by almost a thousand and a raft of improvements made.

Value: £19m

Outcome: Completes 2022



"BY RENOVATING AND UPGRADING THE OLD ADMIRALTY BUILDING, WE ARE MAXIMISING THE VALUE OF THIS IMPORTANT HERITAGE ASSET AND PROVIDING A GOOD HOME FOR THE DEPARTMENT."

MIKE GREEN, CHIEF OPERATING OFFICER
DEPARTMENT FOR EDUCATION (OAB PROJECT)



THE ULTIMATE JOURNEY

2017-2021 REVIEW

Wales & West

We are always welcomed to Wales with open arms by one of the most long-standing, committed SCAPE framework managers from Willmott Dixon, Nathan Howells. Wales and the West have seen the National Construction Framework be the most successful of all the other 3 SCAPE frameworks combined. Currently 44 customers have procured through SCAPE in W&W since 2017 with a turnover total of £482m since 2006.



NATHAN HOWELLS
FRAMEWORK MANAGER

32 projects delivered **£264m+** project value

£40.7m invested in our communities

All data used in this report correct as of October 2021, using Q17 SCAPE report findings.

In the spotlight...



SOUTH WALES POLICE

Story:

Using SCAPE as a procurement vehicle for 10 years has enabled the delivery of an estate rationale programme. Current phase includes demolition of 10 buildings, locating services and diverting existing services whilst removing asbestos in contaminated ground.

Value: £100m (of combined programme)

Outcome: On-going



defect free



customer satisfaction



on time

"I CAN'T THANK YOU ALL ENOUGH FOR PUTTING IN THE EFFORT YOU DID TO COMPLETE THE WORKS ON TIME, AND FOR THE PATIENCE YOU HAVE SHOWN THROUGHOUT THE WHOLE PROCESS."

STEPHEN MOLD, POLICE, FIRE AND CRIME COMMISSIONER



ROOKWOOD HOSPITAL RELOCATION

Story:

New spinal rehabilitation unit along with refurbishment and extension of the existing hospital wards including relocation of physiotherapy department.

Value: £27.9m

Outcome: In progress



"WILLMOTT DIXON ALWAYS ACHIEVES EXACTLY WHAT WE WANT. THEY TEASE OUT OF US WHAT WE NEED BECAUSE WE'RE NOT ALWAYS CLEAR ON WHAT WE'RE TRYING TO ACHIEVE."

CLARE JONES, HEAD OF ESTATES, SOUTH WALES POLICE



THE ULTIMATE JOURNEY

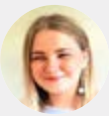
2017-2021 REVIEW

Farrans

A massive thank you to our Northern Ireland partner Farrans who through the National Construction Framework delivered the largest capital development project in the Armagh, Banbridge, Craigavon regions. And not to forget the 44 play parks they delivered to enable our young people to play, live and have fun in the communities they live in.



GARETH MCKNIGHT
BUSINESS DEVELOPMENT
MANAGER



SARAH FEARON
STAKEHOLDER ENGAGEMENT
CO-ORDINATOR

FARRANS

1 project delivered

£5.6m project value



All data used in this report correct as of October 2021, using Q17 SCAPE report findings.

In the spotlight....



SOUTH LAKE LEISURE CENTRE (SLLC)

Story:

This is the largest capital development project in the ABC region. The new state-of-the-art £35m leisure facilities will improve quality of life and wellbeing of residents. SLLC reduces health inequalities across the ABC district, making state-of-the-art leisure provision highly accessible and affordable for all.

Value: £35m

Outcome: Completed



1/2 million hours
worked

with no reportable accidents or incidents



Early
handover

2 weeks 1 day early from original DOV target completion date



100%

Satisfaction

from Client, Andrew Stevenson
(5/5 in 21 categories)



AWARDS

Silver CCS and Responsible Business Champion in the Education Partnership Category at Business in the Community Awards



"WE ARE THRILLED THAT OUR COMMUNITY IS GETTING A BRAND NEW LEISURE CENTRE, BUT MORE THAN THAT WE ARE DELIGHTED THAT WE HAVE MANAGED TO GENERATE SUCH AN IMPORTANT LASTING LEGACY THROUGH ITS CONSTRUCTION. WE THOUGHT CAREFULLY ABOUT THE PROCUREMENT PROCESS BECAUSE WE WANTED TO MAKE SURE THAT NO OPPORTUNITY WAS WASTED IN ADDING VALUE TO OUR LOCAL COMMUNITY."

IT IS GREAT TO BE ABLE TO SAY THAT FARRANS DELIVERED ON THEIR COMMITMENT – WHETHER THROUGH JOB CREATION, SKILLS DEVELOPMENT, EDUCATION OR SHOWING POSITIVE FEMALE ROLE MODELS IN THE CONSTRUCTION INDUSTRY – THEY MANAGED TO MAXIMISE EVERY OPPORTUNITY TO GIVE BACK TO OUR LOCAL PEOPLE."

COUNCILLOR KEVIN SAVAGE, LORD MAYOR OF ARMAGH, BANBRIDGE AND CRAIGAVON



THE ULTIMATE JOURNEY

2017-2021 REVIEW

Midlands

The Midlands is the birth-place of SCAPE; since 2004 the region has grown and evolved through the relationship with SCAPE and our joint customers. With Jerry as our leader we continue to maintain strong relationships that have spanned 15 years – the duration of our partnership with SCAPE.



JERRY MAJOR
FRAMEWORK MANAGER

45 **£130m**

projects delivered invested in our communities

£355m+

project value



In the spotlight....

LINCOLN TRANSPORT HUB

Story: Major redevelopment transforming Lincoln City Centre through the creation of new 1,000 space multi-storey car park, new bus station (14 bus bays), 520m² concourse and public area improvements to the train station forecourt.

Value: £28.8m
Outcome: Completed

8.5/10 customer satisfaction

"I WANT TO THANK EVERYONE AT WILLMOTT DIXON FOR THE DELIVERY OF THE PROJECT, ALONG WITH THE SUPPLY CHAIN. I CANNOT MENTION EVERYONE BECAUSE SO MANY HAD AN IMPORTANT PART TO PLAY."

KATE ELLIS, MAJOR DEVELOPMENT DIRECTOR, CITY OF LINCOLN COUNCIL

LINCOLN BLUE LIGHT FACILITY

Story: Design and construction of a new build blue light facility for fire, police and ambulance services on one campus.

Value: £19.6m
Outcome: Completed

86 supply chain events

99% SME spend

"THIS POSITIVE PROJECT WILL SEE THE EMERGENCY SERVICES IN LINCOLNSHIRE USING THEIR BUILDINGS AND ESTATES IN A MORE EFFECTIVE MANNER."

COUNCILLOR NICK WORTH, EXECUTIVE COUNCILLOR FOR LINCOLNSHIRE FIRE & RESCUE AT LINCOLNSHIRE COUNTY COUNCIL

LEA FIELDS CREMATORIUM

Story: Design and construction of a new crematorium building incorporating a chapel, garden of remembrance and car park.

Value: £5m
Outcome: Completed

753 dedicated to supporting young people into work

98% SME spend

"ON ENTERING THE SITE, A FEELING OF EXCITEMENT CAME OVER ME, BECAUSE WE HAVE HAD AN AMBITION TO BUILD A CREMATORIUM FOR SEVERAL YEARS. THIS IS A MUCH-NEEDED FACILITY FOR OUR LOCAL COMMUNITY."

COUNCILLOR JEFF SUMMERS COUNTY COUNCIL

THE ULTIMATE JOURNEY

2017-2021 REVIEW

London & South

With the recent procurement of the Bedfordwell residential scheme, and an array of projects in the Further Education sector handed over, this framework will be the catalyst for new projects in the next framework due to the relationships that have been created.



**STEPHEN PARKER
AND ERIKA
BUCKENHAM**
FRAMEWORK MANAGERS

9
projects
delivered

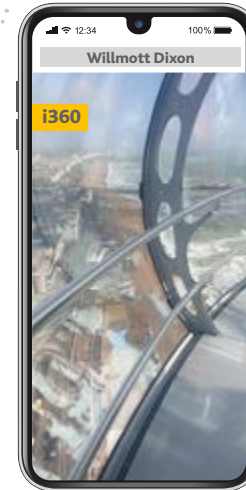
£97m+
project value

£5m
invested in our
communities

All data used in this report correct as of October 2021, using Q17 SCAPE report findings.



In the spotlight....



BRIGHTON MET COLLEGE

Story:

A new build 3-storey extension to the existing Greater Brighton Metropolitan College campus with limited refurbishment of the lower floors will provide facilities to address the long-standing skills shortages.

Value: £14.5m

Outcome: Complete

ADUR CIVIC CENTRE

Story:

A new four storey office building for Adur and Worthing District Council. The building is a CAT A fit out, with open plan spaces for tenant flexibility with a BREEM 'Very Good' requirement.

Value: £9.6m

Outcome: Complete



Encouraging
growth
in local economy



BREEM rating



Very good



THE ULTIMATE JOURNEY

2017-2021 REVIEW

North

Welcome to the North – some may say our most successful region on the SCAPE framework and some may say that this is down to Jason Hallas and his committed team of framework specialists. With such a dedicated team we have seen some amazing projects over this framework, with a rise in emphasis on sustainable buildings. With the repeat customer base this region has, the pipeline for the next generation of frameworks is more prominent than ever.



JASON HALLAS
FRAMEWORK MANAGER

34 projects delivered
£45m+ invested in our communities

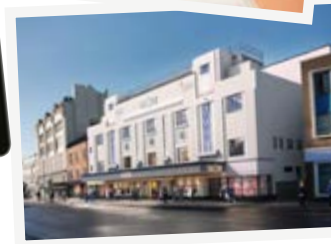
£371m+ project value



BREEAM rating 
Excellent

Major renovation of 1913 building

All data used in this report correct as of October 2021, using Q17 SCAPE report findings.



In the spotlight....

FEETHAMS OFFICE BLOCK, DARLINGTON

Story: Creation of a new space designed to power local businesses at the heart of Darlington, and to continue our partnership with Darlington Borough Council. The Feethams Office Block offers local businesses 3,836m² of Grade A open plan office space over five storeys.

Value: £8m
Outcome: Completed

GLOBE THEATRE, STOCKTON-ON-TEES

Story: Transforming and revitalising the Art Deco landmark, and renovating the neighbouring high street building. The project received a £4.5m national lottery grant through the Heritage Lottery Fund's Heritage Enterprise Scheme.

Value: £21m
Outcome: Completed

STUDENT LIFE BUILDING – TEESIDE UNIVERSITY

Story: Supporting Teesside University's 10-year £300m Campus Masterplan, this project was one in a long line in partnership with Teesside University. A student-centred, and student-led space, providing information and services to support, inspire and empower success in learning and life.

Value: £11m
Outcome: Completed

GATESHEAD COUNCIL SPECULATIVE OFFICE BLOCK

Story: Gateshead Council's first new Grade A office development in almost 10 years providing 5,681m² of flexible floor space in the Baltic Business Quarter.

Value: £12.9m
Outcome: Completed

"IN CHALLENGING TIMES, THE BUILDING IS 100% LET BEFORE THE DOORS HAVE EVEN OPENED. IT HAS ALREADY CREATED A NUMBER OF JOBS ACROSS THE WHOLE SUPPLY CHAIN, INCLUDING OVER 450 CONSTRUCTION JOBS ON SITE FOR THE LAST 18 MONTHS."

CLLR MARTIN GANNON



THE ULTIMATE JOURNEY

2017-2021 REVIEW

London & East

The Oracle of SCAPE in London and the East, Mr Les Carter and his team have delivered a diverse range of projects during this term, from the unique Forestry School in Bedfordshire to Harpenden Cultural Leisure Centre, the team have been busy serving new customers whilst nurturing existing relationships.



LES CARTER
FRAMEWORK
MANAGER



15
projects delivered

£135m
project value

£23m
invested in our communities

All data used in this report correct as of October 2021, using Q17 SCAPE report findings.



In the spotlight....

COTTON END PRIMARY SCHOOL

Story:

This project consisted of a new build primary school made up of 5 blocks, to allow 3 form entry, suitable for 630 pupils between the ages of 4 and 11.

The concept for this project was based on 'forest schools', which originated in Scandinavia. These schools provide an 'outdoor approach' to learning, consequently a key focus of this project was on sustainability and the surrounding landscape and how we could integrate these.

Value: £10.8m

Outcome: Complete



HARPENDEN LEISURE CENTRE

Story:

This project will extend, re-model and refurbish the existing Leisure Centre, sports hall, dance studios and a larger gym plus new changing rooms, a steam room, sauna and reception area.

Harpenden Cultural Centre will hold a 511-seat theatre named after comedy legend and former Harpenden resident Eric Morecambe.

Value: £16.9m

Outcome: Complete



COMMUNITY WOOD RECYCLING

Story:

Network of social enterprises collecting and reusing wood in the most environmentally beneficial way while creating jobs and training disadvantaged people.

Value: Working together with Willmott Dixon for over 5 years.

Outcome: Working on projects throughout North London, West London, Hertfordshire, Buckinghamshire and Bedfordshire.



7 paid jobs created



16 people trained

"THE QUALITY OF THE BUILDING IS OUTSTANDING; EVERYBODY LOVES THE WORK THAT HAS BEEN DONE."

KIRK SHARP, BEDFORD BOROUGH COUNCIL



THE ULTIMATE JOURNEY

2017-2021 REVIEW

Central South

An ever-growing region on the National Construction Framework with amazing projects such as the Poole Gateway and a long-standing relationship with Swindon Borough Council, this region is set to be even more successful on the new SCAPE Construction Framework, with Sarah leading the way in the Central South region.



SARAH BASTAJIAN
FRAMEWORK DIRECTOR

7
projects delivered

£53m
project value

£8m
invested in our communities

All data used in this report correct as of October 2021, using Q17 SCAPE report findings.



In the spotlight....

WILLIAM MORRIS PRIMARY SCHOOL

Story: Our education specialists have created a new build single storey primary school and nursery close to the expanding Tadpole Garden Village housing development in North Swindon. The new school building is spacious and purpose built, it includes a large hall, design technology room and library area. The classrooms are bright and vibrant, installed with new equipment and resources, and have direct access to outdoor learning areas. The school site incorporates an attractive field and pond area that is utilised for learning, PE and sports.

Value: £8.1m
Outcome: Completed

"WHAT AN EXCITING JOURNEY! OPENING IN AUTUMN 2019 WITH RECEPTION AND NURSERY, TO EXPAND TO BECOME A TWO-FORM ENTRY PRIMARY SCHOOL, IN THE BEAUTIFUL GROWING TADPOLE GARDEN VILLAGE."

MRS J FRASER, HEADTEACHER, WILLIAM MORRIS PRIMARY SCHOOL



DORSET COUNTY HOSPITAL

Story: Willmott Dixon started work on the new emergency department at the Dorchester hospital site which will allow Dorset County Hospital NHS Foundation Trust to accommodate a rise in patient numbers. The work involves two new extensions; one to create a new entrance and the other to expand the emergency department wards into the existing courtyard area. Sustainability will be at the heart of the project, with the building being designed to the BREEAM 'Very Good' specification.

Value: £6.5m
Outcome: Completion May 2022

"WILLMOTT DIXON HAS A PROVEN TRACK RECORD IN DELIVERING HIGH-QUALITY HEALTHCARE FACILITIES, AND USING THE SPEED, CERTAINTY AND EMBEDDED SOCIAL VALUE REQUIREMENTS OF THE SCAPE FRAMEWORK ENSURES THE LOCAL COMMUNITY BENEFITS ARE MAXIMISED AT EVERY STAGE. BY DESIGNING LOW-CARBON SOLUTIONS IN FROM THE BEGINNING, THE BUILDING WILL BE HIGHLY SUSTAINABLE AND SUPPORT OUR COLLECTIVE EFFORTS TO BUILD BACK GREENER."

MARK ROBINSON, CHIEF EXECUTIVE, SCAPE GROUP



POOLE GATEWAY – BOURNEMOUTH UNI

Story: Started on the Major Works framework but handed over in Autumn 2019; a new cutting-edge technical facility for Bournemouth University. Our team have continued their work with Bournemouth University by building a new specialist teaching facility. Opening in early spring 2020, the new Poole Gateway Building provides a range of high-quality technical facilities to support undergraduate and postgraduate courses as well as research. It will be used predominantly by students from the Faculty of Science & Technology and the Faculty of Media & Communication, although it will also be open and accessible to students from other faculties.

Value: £21.4m
Outcome: Complete



87.7%
local labour within 40 miles of site

9/10
customer satisfaction

BREEAM rating **Excellent**



THE ULTIMATE JOURNEY

2017-2021 REVIEW

Fortem

Fortem was appointed to the SCAPE Regional Construction framework for the South Midlands area in February 2018. The framework has enabled Fortem to secure projects and develop new relationships across a range of markets in the region.



LOUISE MORRIS
FRAMEWORK MANAGER



1 project delivered
£5.9m project value



In the spotlight....

NORTHAMPTONSHIRE POLICE

Story:

Fortem are proud to be working on Northamptonshire Police's new training centre that is being created to add capacity to support the current drive to recruit hundreds more officers for the Force. Based in the heart of Weston Favell, the commercial building is now being refurbished as a new Police Learning and Development Centre.

Value: £945k

Outcome: Completed

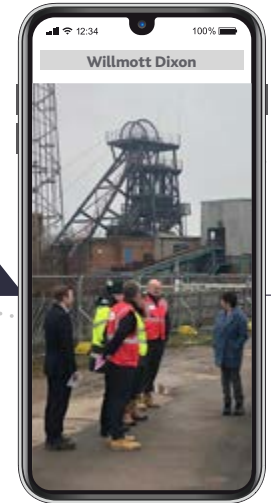
SNIBSTON COUNTY PARK

Story:

An important addition to the overall redevelopment of Snibston Country Park, the new café and education building will provide new accommodation and space to support the existing Century Theatre building.

Value: £3.1m

Outcome: Completed



96%
overall achievement

49%
local labour within 10 miles of site

2,240hrs
dedicated to support young people into work

77%
local labour within 40 miles of site

"NORTHAMPTONSHIRE POLICE IS IN THE MIDDLE OF A MAJOR RECRUITMENT DRIVE AND THE WAY THAT OFFICERS ARE TRAINED WILL SHAPE THOSE OFFICERS, AND THE FORCE, FOR THE NEXT 30 YEARS. THIS NEW FACILITY WILL BE AMONG THE BEST IN THE REGION AND IT IS A VERY IMPORTANT INVESTMENT IN THE FUTURE OF NORTHAMPTONSHIRE POLICE."

STEPHEN MOLD, POLICE, FIRE AND CRIME COMMISSIONER

"NOT ONLY WILL THIS WORK MAKE THE PARK MORE ATTRACTIVE FOR VISITORS, BUT IT WILL ALSO RECONNECT THE SITE WITH THE TOWN AND IN THE FUTURE PROVIDE MUCH NEEDED HOUSING TO THE AREA. WE WANT SNIBSTON COUNTRY PARK TO BE AN ASSET FOR THE COMMUNITY, WHICH STAYS TRUE TO THE SITE'S MINING HERITAGE ROOTS."

NICK RUSHTON, LEADER OF LEICESTERSHIRE COUNTY COUNCIL



REGIONAL FRAMEWORK MANAGERS

SCAPE framework management structure



REGIONAL

North	Jason Hallas Framework Manager	Kitty Zibala Framework Coordinator	Nathan Loeb Commercial Lead
London & East	Les Carter Framework Manager	Kim Low Framework Coordinator	Richard Nash Commercial Lead
Midlands	Jerry Major Framework Manager	Lee Morley Framework Coordinator	Nick Stark Commercial Lead
Wales & West	Nathan Howells Framework Manager	Kathryn Benson Framework Coordinator	Iain Young Commercial Lead
London & South	Stephen Parker Framework Manager	Erika Buckenham Framework Manager	Paul Wilkins Commercial Lead
Interiors National	Joshua Armstrong Framework Manager	Cassie Thurston Framework Coordinator	Nick Anderson Commercial Lead
Interiors Midlands	Jolene McLaren Framework Manager		
Central South	Sarah Bastajian Framework Director	Lisa Greenland Framework Coordinator	Richard Shepherd Commercial Lead





WILLMOTT DIXON

SINCE 1852

Project Information



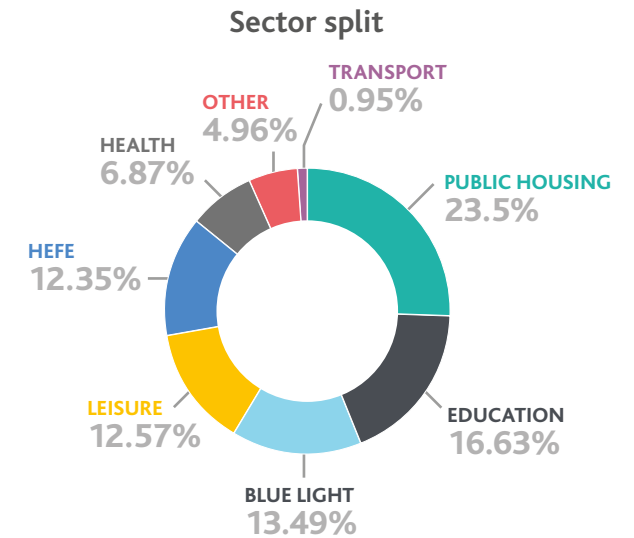
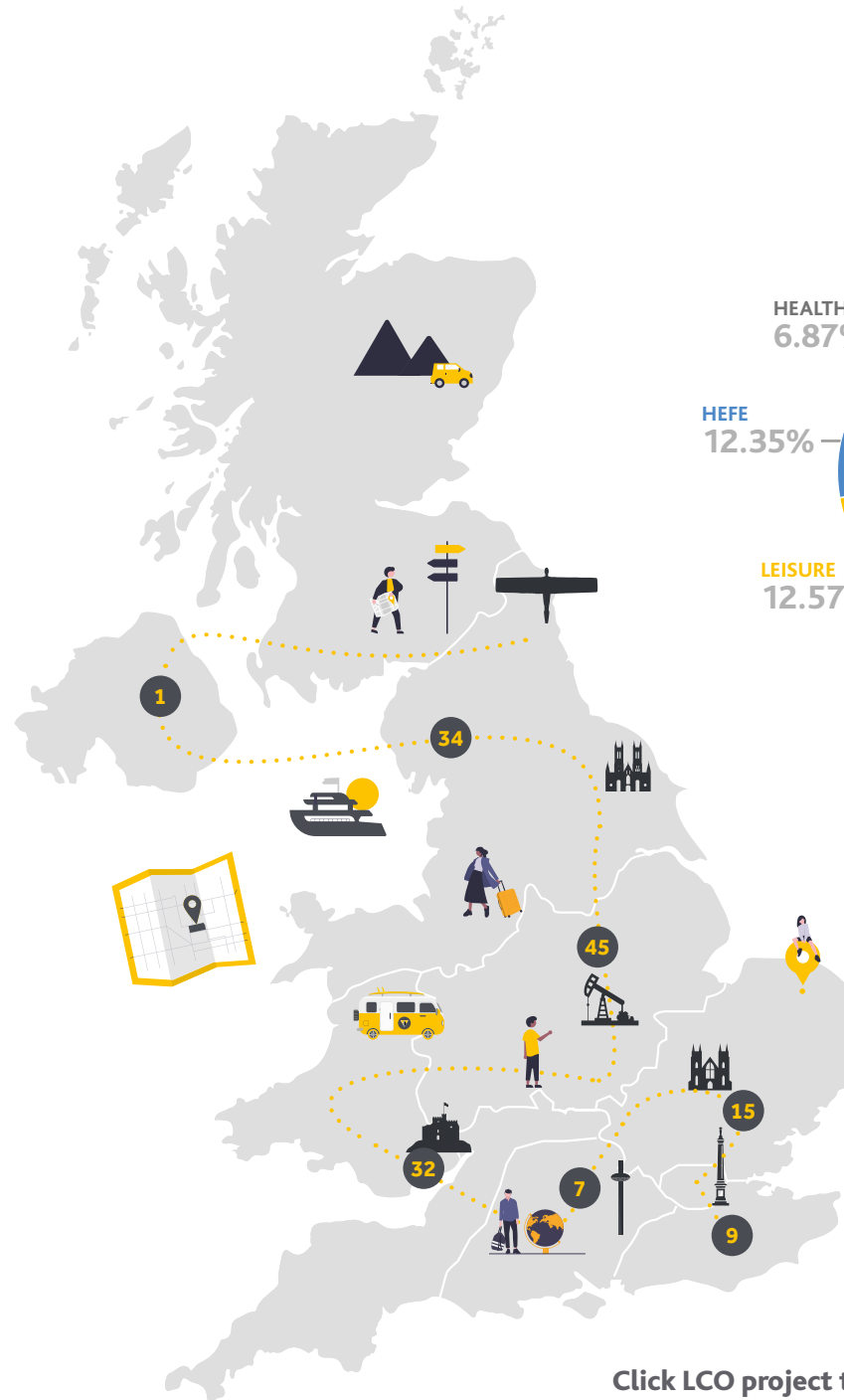
 **SCAPE**
CONSTRUCTION



Project Detail

	Total projects per LCO
Interiors	13
Wales & West	32
Farrans	1
Midlands	45
London & South	9
North	34
London & East	15
Central South	7
Fortem	1

Total projects **157**



£
£1.36bn
Total project value

£
£275m
Total investment in our communities

Click LCO project totals to view more details

THE ULTIMATE JOURNEY

2017-2021 REVIEW



WILLMOTT DIXON

SINCE 1852



..... IN MEMORY OF

*Noel DeBruin
& Paul Windle*



Thank you

SCAPE
CONSTRUCTION

